

HUNTERS®

HERE TO GET *you* THERE

19 Bondgate Green Close, Ripon, HG4 1QX

Offers Over £200,000

Property Images



HUNTERS®

HERE TO GET *you* THERE

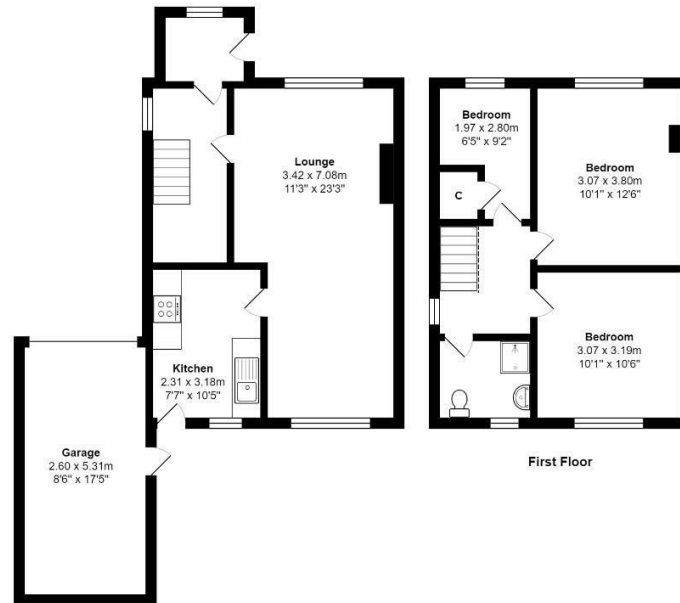
Property Images



HUNTERS®

HERE TO GET *you* THERE

Floorplan



Ground Floor

First Floor

Total Area: 89.8 m² 967 ft²

All measurements are approximate and for display purposes only

EPC

Energy Efficiency Rating		
	Current	Potential
Very energy efficient - lower running costs		
(92 plus) A		83
(81-91) B		
(69-80) C		
(55-68) D	66	
(39-54) E		
(21-38) F		
(1-20) G		
Not energy efficient - higher running costs		
England & Wales		EU Directive 2002/91/EC

Map



Details

Type: House Beds: 3 Bathrooms: 1 Reception: 1 Tenure: Freehold

Summary

Nestled in the charming Bondgate Green Close in Ripon, with views of the cathedral, this delightful three-bedroom family home is a true gem waiting to be discovered and offers huge potential to improve and modernise throughout but overall has been beautifully maintained.

The property boasts a spacious and bright through lounge dining room with a modern fitted kitchen with built in appliances. To the first floor are three good sized bedrooms and a house shower room for added convenience.

Outside, is a rear courtyard-style garden with timber shed which gives direct access to the single garage and there is also an enclosed and gate front garden filled with mature plants.

Parking will never be an issue with space for two vehicles and a single garage. The potential to further enhance and personalise this property makes it an exciting opportunity for those looking to create their perfect home.

The property comes with central heating and is double glazing.

Don't miss out on the chance to make this house your own and experience the joys of living in such a welcoming and well-loved space.

Features

• THREE BEDROOMS • SPACIOUS THROUGH LOUNGE DINING ROOM • MODERN FITTED KITCHEN • ENTRANCE PORCH WITH STORAGE CUPBOARD • HOUSE SHOWER ROOM • REAR ENCLOSED COURT YARD STYLE GARDEN • FRONT GARDEN GATED • DRIVEWAY AND GARAGE • CENTRALLY HEATED AND DOUBLE GLAZED • CLOSE TO CITY CENTRE